

## Scheme News and Updates

**UK NEQAS**

Immunocytochemistry &amp; In-Situ Hybridisation

### ① We are now ISO 17043 Accredited

Following a visit by UKAS in February 2016, UK NEQAS ICC & ISH is now fully accredited to ISO 17043.



The list of accredited modules can be found on the UKAS Accredited PT Providers link: Click on the image on the left or the following link:

[www.ukas.com/list-all-organisations/?org\\_type=13&org\\_cat&cpage=3](http://www.ukas.com/list-all-organisations/?org_type=13&org_cat&cpage=3)

### ② ALK NSCLC IHC Module is now Live

The ALK for NSCLC module has been given approval by the Techniques in Cellular Pathology Steering Committee to be removed from Pilot to a Live module as from April 2016, Run 114.

All UK Clinical laboratories who subscribe to this module will now be Poor Performed in line with the other Biomarkers. Due to the direct impact that the results of assays for biomarkers have on patient management, more stringent performance monitoring mechanisms are employed: See section 2.8 of the Participants Manual ([www.ukneqasiccish.org/participant-manuals](http://www.ukneqasiccish.org/participant-manuals)).

This module will be formally requested to be included in our ISO 17043 repertoire.

### ③ Breast HER2 ISH Technical Module is now Live

Laboratories who take part in the Breast Her2 ISH module (Interpretive) must also submit their slide for the ISH Technical module. The two modules will now be combined and also be subject to Poor Performance monitoring. The scheme will contact participants with poor performance details.

### ④ User Survey 2016

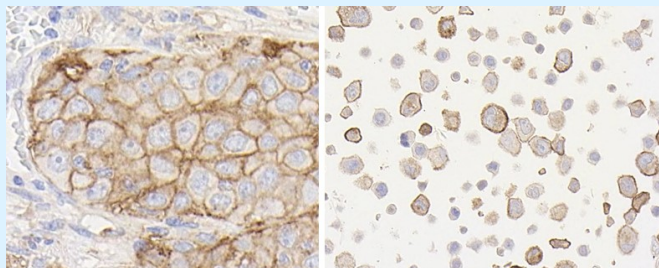
The latest User Survey is now ready to be completed. If you have not already sent back a reply please click on the link below:

[www.ukneqasiccish.org/user-satisfaction-survey-2016](http://www.ukneqasiccish.org/user-satisfaction-survey-2016)

### ⑤ PD-L1 NSCLC IHC Module

A PD-L1 NSCLC IHC module is now being prepared. We have been busy testing samples in preparation.

We hope to have the pre-pilot assessment running by the third quarter in 2016. All participants will be invited to take part in due course and we hope to make this module freely available in the first instance.



A separate survey will be distributed to all participants who would like to take part.

### ⑥ Participant Meeting 2016

We are currently planning the next Participant Meeting and putting together a programme. At this stage we are looking to hold this at a hotel in Central London close to the UK NEQAS ICC & ISH office. Unlike previous years, we will have to charge participants this time in order to cover the cost of holding this meeting in improved facilities.

We have set a *provisional* date of September 9th, 2016. This will be confirmed in the next few weeks.



### ⑦ Looking for an IHC Best Method?

Don't forget we have a whole database of methods to help you get started: [www.ukneqasiccish.org/best-methods](http://www.ukneqasiccish.org/best-methods)

1	* Area of Pathology	--Please Select--
2	* Primary Antibody	--Please Select--
3	* Antibody Supplier	--Please Select--
4	* Automation Instrument	--Please Select--
5	* Detection Kit or 2nd Layer	--Please Select--

We will be adding more data in the next few weeks.

### ⑧ Scheme Documentation

Due to various changes, such as those detailed above, we will be periodically updating the scheme's documentation on the website; e.g. Participant Manual and Poor Performance Criteria, please check that you have the latest versions where applicable.

#### Change of Address:

Please remember that the scheme has moved. Our new address is: **Room 127, Finsbury Business Centre 40 Bowling Green Lane, London EC1R 0NE. UK**

Tel: +44 (0) 207 415 7065

Fax: +44 (0) 207 415 7048

For further details visit: [www.ukneqasiccish.org](http://www.ukneqasiccish.org)

If you have any queries please email: [n.bilbe@ucl.ac.uk](mailto:n.bilbe@ucl.ac.uk)